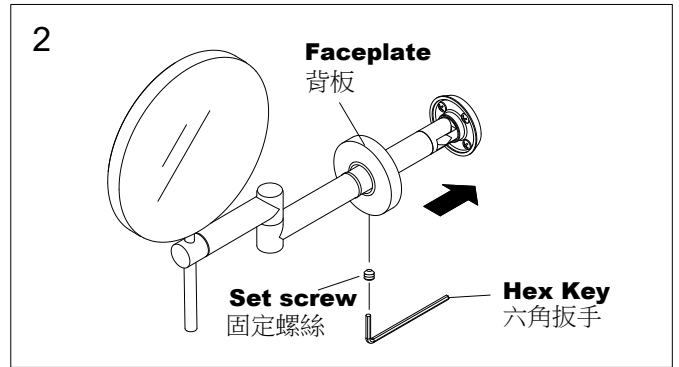
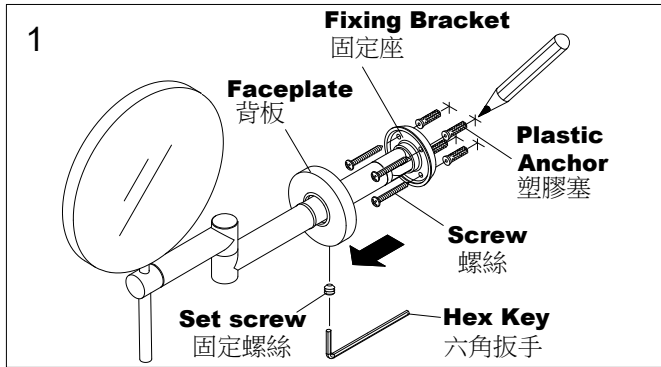


INSTALLATION INSTRUCTIONS

2.5X Magnifying Mirror W/Adjustable Arms

壁式旋轉放大鏡組

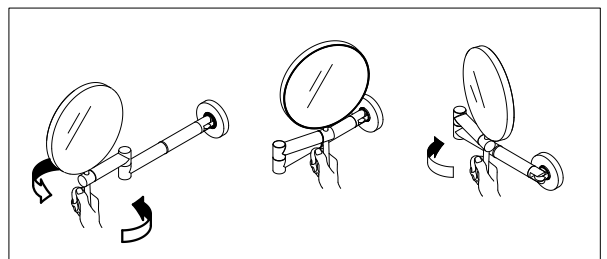
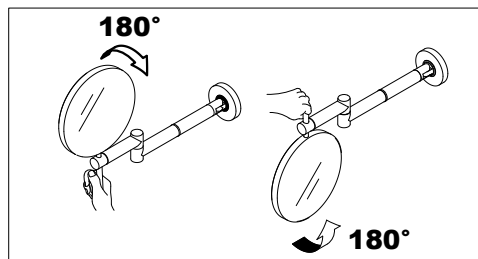


1. Loosen the **Set Screw** under the **Faceplate** with provided **Hex Key**, and move forward the **Faceplate** to gain the space of installation. Select the proper position for product and mark the centers of mounting holes on wall by using a spirit level and refer to the actual product for distance among holes.
用隨附六角扳手鬆開背板下方的固定螺絲，將背板往前移。選取預定安裝的位置，並在牆壁上畫上預定鑽孔記號，並確認鑽孔的位置是在同一水平線上，用產品比對確認鑽孔的距離。
2. Use a 6mm drill-bit, drill the holes at marked positions to 4cm depth. Insert the **Plastic Anchors** to the holes and make them be flush with wall, and well fix the **Fixing Bracket** with **Screws**. Cover the **Fixing Bracket** with **Faceplate** and tighten the underneath **Set Screw** to finish the installation.
當安裝在水泥牆，使用6mm鑽頭，鑽孔深度4公分，嵌入塑膠塞並使之齊平於牆面，將固定座以螺絲鎖緊在牆上，將背板套回固定座，再鎖緊下方的固定螺絲，完成安裝程序。

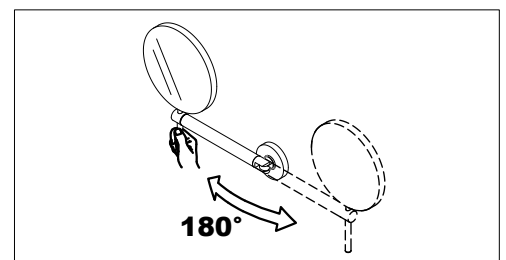
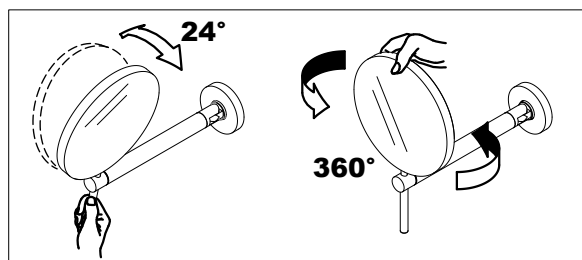
OPERATION

操作方式

Type 1 6910-R3



Type 2 6910-R2



FIXING CONTENTS

組配件內容

<p>A. Mirror (Image is for reference only) 鏡子 (本圖示僅供參考，鏡子外型依實際產品為主。)</p>		<p>B. Screw * 4 螺絲</p>	<p>C. Plastic Anchor * 4 塑膠塞</p>	<p>D. Hex Key 六角扳手</p>
---	--	-----------------------------------	---	-----------------------------------