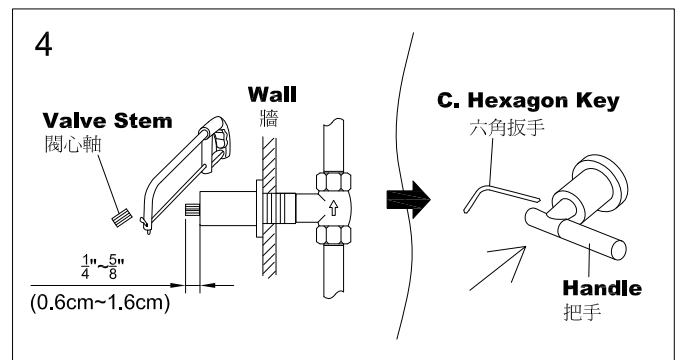
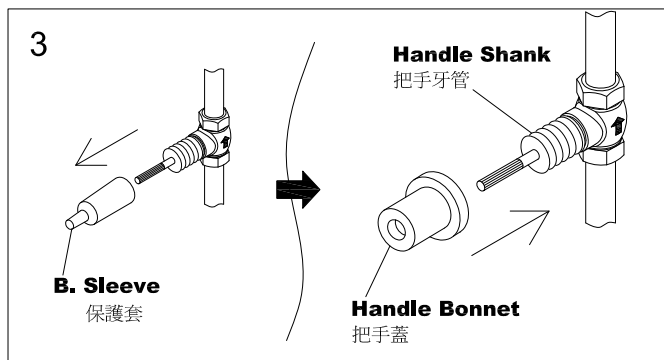
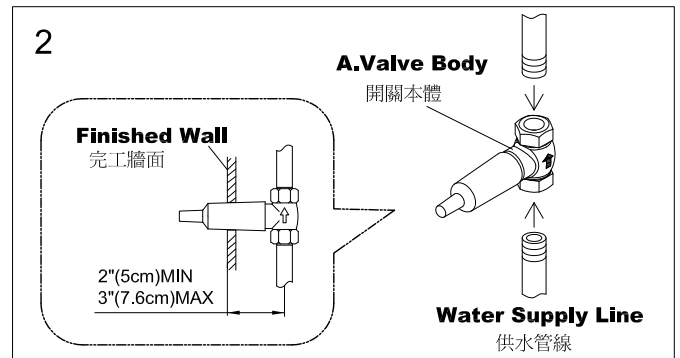
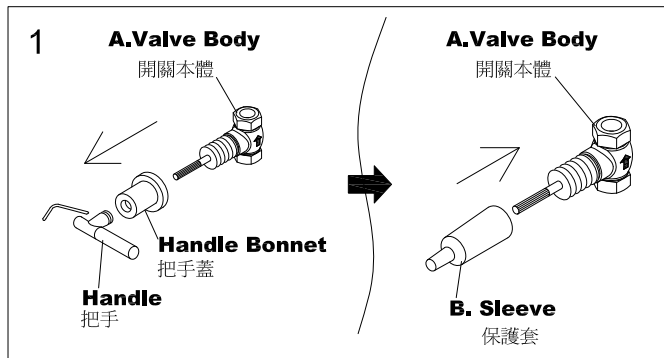


INSTALLATION INSTRUCTIONS

Water Valve

嵌牆式開關安裝說明



CAUTION : Risk Of Product Damage.

注意：為增加產品使用壽命，請依說明清潔供水管路。

When finished installation, turn the valve on and run for 1 minute before using.

完成安裝後，需在使用前先把供水開關全開排水持續一分鐘。

NOTE: Disassemble the **Handle** and **Handle Bonnet** from the Valve Body First. Using the **Sleeve** provided to protect the external threads while installation if required. (Fig.1)

注意：安裝前，先將把手與把手蓋從本體鬆開。如須使用隨附塑膠保護套保護陶瓷中心栓，必須在安裝程序前先套好。

1. Pay attention to minimum 2" (5cm) and maximum 3" (7.6cm) dimensions for mounting information as shown. (Fig.2)

牆壁內本體與牆面的距離須保持在最小2"(5cm)到最大3"(7.6cm)之間，此為安裝時的必要條件。

2. Install **Valve Body** and water supply Line. (Fig.2)

安裝閥體和供水管線。

3. Carefully take off **Sleeve** from **Valve Body**. Attach **Handle Bonnet** onto **Handle Shank** and cut overlong **Valve Stem** to certain length (1/4" ~ 5/8" or 0.6cm ~ 1.6cm) as shown, to fix the **handle**. (Fig.3 & Fig.4)

組裝前，小心取下塑膠保護套。裝置鎖緊把手蓋到牆內本體的牙管上，並依需要可切除凸出把手蓋過長的閥心軸。

4. Press Handles over the **Valve Stem** to proper position and tighten setscrew. (Fig.4)

將把手押入閥心軸到適當位置，並鎖緊埋頭螺絲固定把手。

FIXING CONTENTS

組配件內容

