

## Pan 2

### Robe Hook 6779-50-80CP

#### INTRODUCTION:

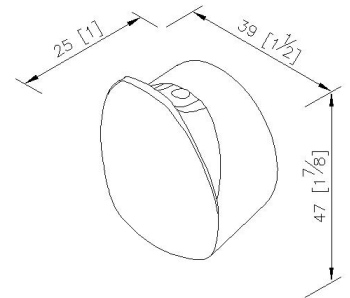
JUSTIME Design Team created the Pan 2 Series Faucets with concise style, and integrated rectangular and circular lines into the shape design. Though it has just used the most basic geometric elements, the design team also varied the faucets to be special and bring the positive benefit for bathroom.

The brief geometric elements are the core concepts of whole design style, and they could also be proofed in any fashion trends. Moreover, the shape designs could fit for the different styles of bathroom design easily to provide users various choices.



#### DESCRIPTION:

- 1.Brass of forging body meets JIS 3771 standard.
- 2.Premium metal construction for durability.
- 3.Justime finishes resist corrosion and tarnish.
- 4.Finish meets the standard of ASTM-SC2.
- 5.Correctly installed product's loading is 5 kgf.
- 6.Coordinates with other products in Pan 2 Collection.



unit: mm[inch]

#### Certification:

#### Fixing Kits:

- 1.Hex Key2.5mm\*1
- Plastic Anchors\*2
- Zinc Coated Bolt\*2

#### AWARD: